

**PLAN OF SUBDIVISION OF LOT B,
DL 167, ODYD, PLAN 7438.**

BCGS 82E.083
SCALE 1:500 METRIC



The intended plot size of this plan is 432mm in width by 280mm in height (B-size) when plotted at a scale of 1:500 METRIC.

LEGEND

- Denotes Control Monument Found
- Denotes Standard Iron Post Found
- Denotes Standard Iron Post Set
- SP Denotes "See Plan 6341"

Distances shown are horizontal, ground-level distances, in metres and decimals thereof.

Integrated Survey Area No. 4, City of Kelowna, NAD83(CSRS) 4.0.0.BC.1.

Grid bearings are derived from GNSS ties to geodetic control monuments 95H1844 and 95H1845 and are referred to the central meridian of UTM Zone 11.

The UTM coordinates and estimated absolute accuracy achieved are derived from the MASCOT published coordinates and standard deviations for geodetic control monuments 95H1844 and 95H1845.

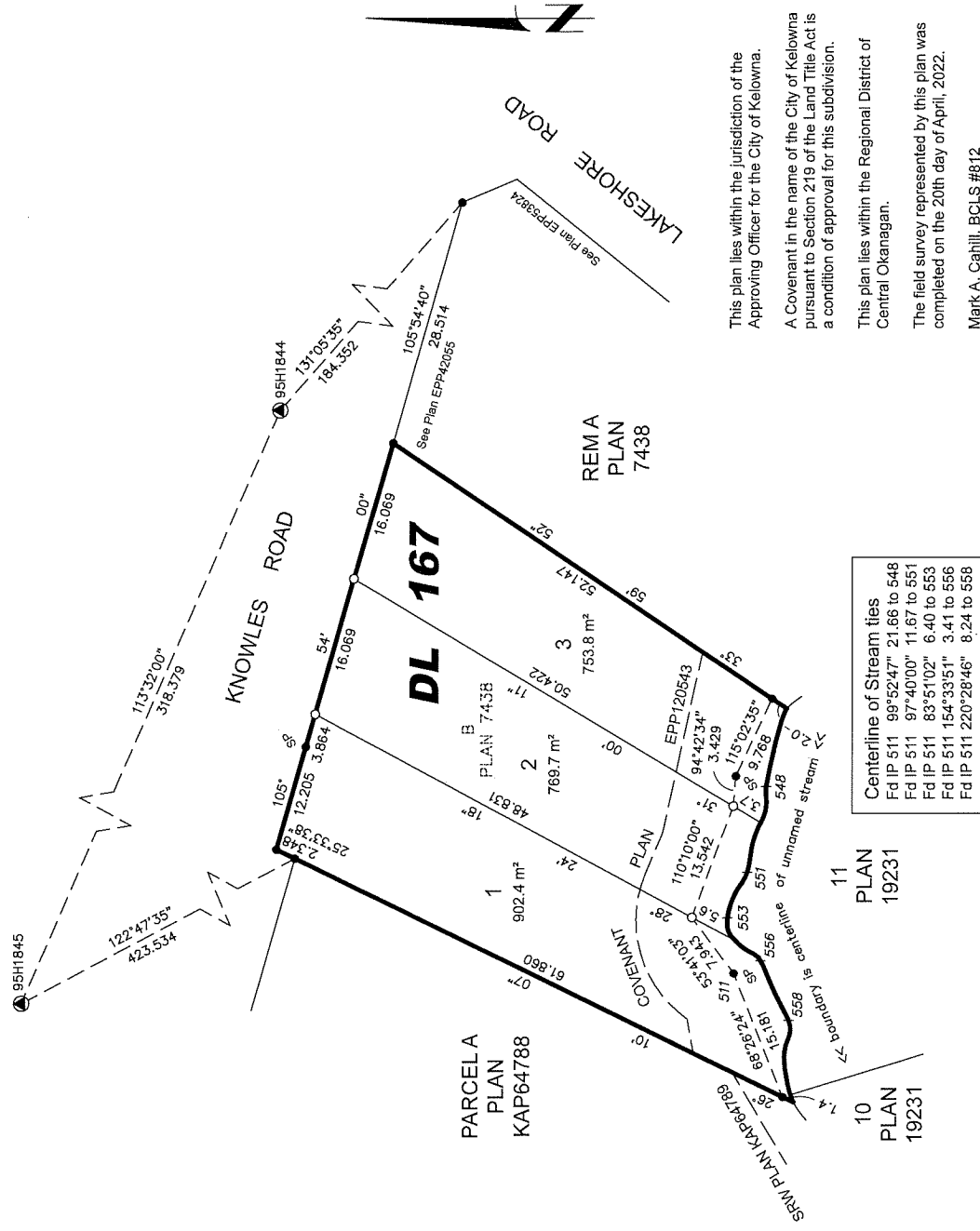
This plan shows horizontal ground-level distances unless otherwise specified. To compute grid distances, multiply ground-level distances by the average combined factor of 0.9999400 which has been derived from geodetic control monument 95H1844.

NAD83(CSRS) 4.0.0.BC.1 UTM ZONE 11 COORDINATES			
Point	Northing	Easting	Absolute Accuracy
95H1844	5521714.317	320597.892	0.02
95H1845	5521841.432	320306.011	0.02

AiTerra
Land Surveying Ltd.

www.AiTerraSurvey.ca
Ph: 250/762-0122 File:321016-SD

PLAN EPP120542



This plan lies within the jurisdiction of the Approving Officer for the City of Kelowna.

A Covenant in the name of the City of Kelowna pursuant to Section 219 of the Land Title Act is a condition of approval for this subdivision.

This plan lies within the Regional District of Central Okanagan.

The field survey represented by this plan was completed on the 20th day of April, 2022.

Mark A. Cahill, BCLS #812

Centerline of Stream ties	
Fd IP 511 99°52'47"	21.66 to 548
Fd IP 511 97°40'00"	11.67 to 551
Fd IP 511 83°51'02"	6.40 to 553
Fd IP 511 154°33'51"	3.41 to 556
Fd IP 511 220°28'46"	8.24 to 558

PLAN EPP120543

REFERENCE PLAN OF COVENANT OVER PARTS OF
LOTS 1-3, DL 167, ODYD, PLAN EPP120542.

PURSUANT TO SECTION 99 OF THE LAND TITLE ACT

BCGS 82E.083

SCALE 1:500 METRIC



The intended plot size of this plan is 432mm in width by 280mm in height (B-size) when plotted at a scale of 1:500 METRIC.

LEGEND

- Denotes Control Monument Found
- Denotes Standard Iron Post Found
- Denotes Standard Iron Post Set
- SP Denotes "See Plan 6341"

Distances shown are horizontal, ground-level distances, in metres and decimals thereof.

Integrated Survey Area No. 4, City of Kelowna, NAD83(CSRS) 4.0.0.BC.1.

Grid bearings are derived from GNSS ties to geodetic control monuments 95H1844 and 95H1845 and are referred to the central meridian of UTM Zone 11.

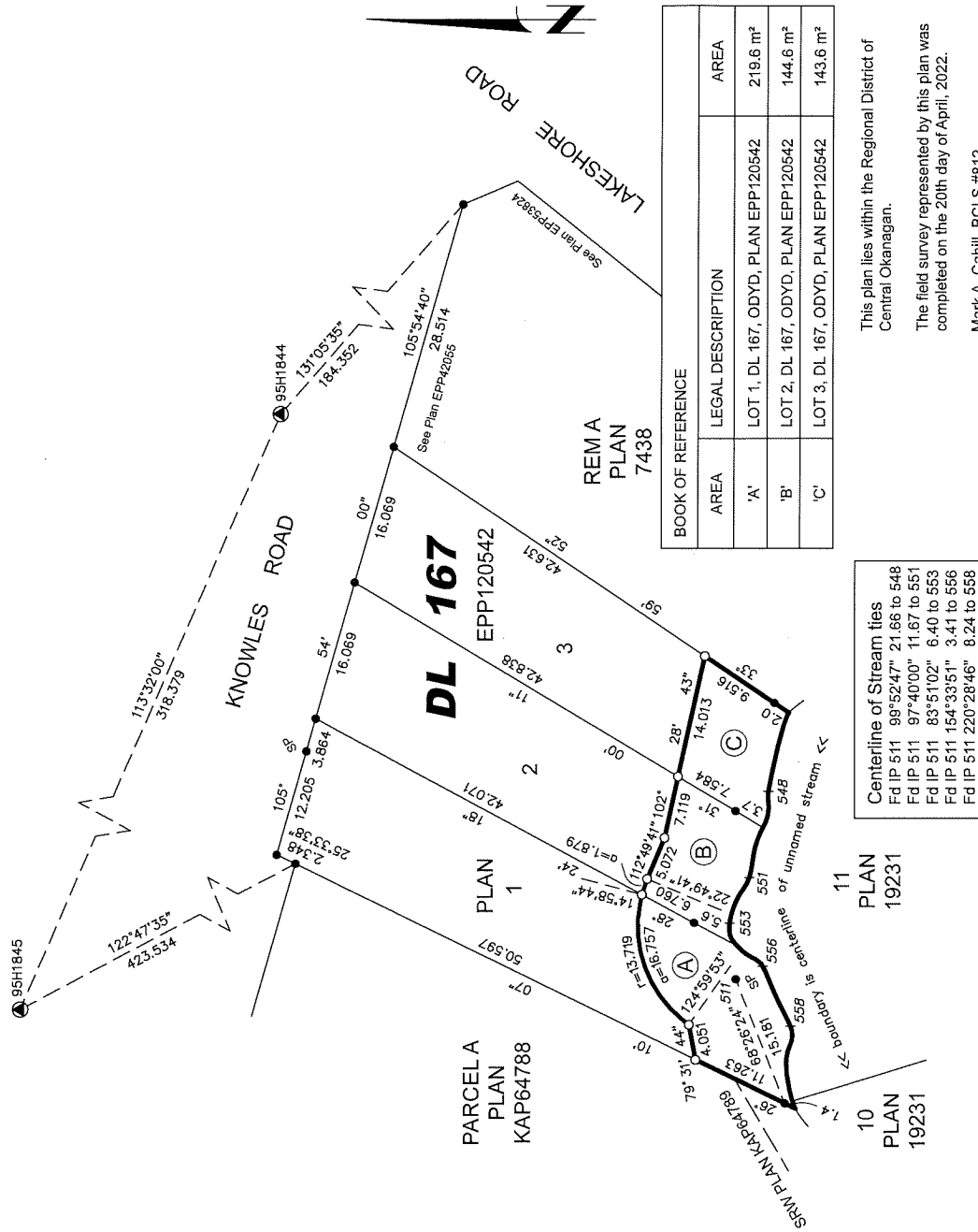
The UTM coordinates and estimated absolute accuracy achieved are derived from the MASCO published coordinates and standard deviations for geodetic control monuments 95H1844 and 95H1845.

This plan shows horizontal ground-level distances unless otherwise specified. To compute grid distances, multiply ground-level distances by the average combined factor of 0.9999400, which has been derived from geodetic control monument 95H1844.

NAD83(CSRS) 4.0.0.BC.1 UTM ZONE 11 COORDINATES		
Point	Northing	Easting
95H1844	5521714.317	320597.892
95H1845	5521841.432	320306.011
		Absolute Accuracy
		0.02
		0.02

Aiiterra
Land Surveying Ltd.

www.AiiterraSurvey.ca
Ph: 250.762.0122 File:321016-SD-RF



BOOK OF REFERENCE		
AREA	LEGAL DESCRIPTION	AREA
'A'	LOT 1, DL 167, ODYD, PLAN EPP120542	219.6 m ²
'B'	LOT 2, DL 167, ODYD, PLAN EPP120542	144.6 m ²
'C'	LOT 3, DL 167, ODYD, PLAN EPP120542	143.6 m ²

This plan lies within the Regional District of Central Okanagan.

The field survey represented by this plan was completed on the 20th day of April, 2022.

Mark A. Cahill, BCLS #812

Centerline of Stream ties	
Fd IP 511	99°52'47" 21.66 to 548
Fd IP 511	97°40'00" 11.67 to 551
Fd IP 511	83°51'02" 6.40 to 553
Fd IP 511	154°33'51" 3.41 to 556
Fd IP 511	220°28'46" 8.24 to 558